

SH1648PLDG

Home // SAILING // YACHTING TECHNICAL // HPX // HPX OCEAN JACKET

HPX OCEAN JACKET

Platinum / Dark Grey



COLOUR VARIANTS



Gold / Dark Grey



Red / Dark Grey

SIZE

XS,S,M,L,XL,XXL

PRODUCT SPECIFICATIONS

- Gore-Tex® Pro Shell (Ocean Technology) laminate
- Roll-away fluorescent hood with width & height adjustment
- Spume visor to protect face & adjustable top collar edge
- Stretch GORE-TEX® fabric covering upper back, shoulders, sleeve area, elbows, base of hood & hood pod
- Recycled fleece lined collar
- Unlined for ease of movement
- Articulated elbows & underarms
- Adjustable cuff design giving virtual drysuit cuff protection
- Double storm flap with drainage channel covering 2-way zip
- Handwarmer chest pockets secured with Velcro and zipped inner security pocket
- Handwarmer pockets with pull out to dry recycled fleece lining
- Large zipped pockets with mesh drainage
- Hem with adjustable centre front tensioner
- Adjustable internal drawstring waist
- Seat patch with internal abrasion free seams
- Facility to attach lifejacket
- Musto prismatic reflectors
- Riri zip
- Heavyweight Donnington outer fabric



SH1694PLDG

Home // SAILING // YACHTING TECHNICAL // HPX // HPX OCEAN SMOCK

HPX OCEAN SMOCK

Platinum / Dark Grey



COLOUR VARIANTS



Red / Dark Grey

SIZE

S,M,L,XL,XXL

PRODUCT SPECIFICATIONS

- Gore-Tex® Pro Shell (Ocean Technology) laminate
- Roll-away fluorescent hood with width & height adjustment
- Spume visor to protect face
- Non abrasive stretch fabric neck seal with Velcro adjustment
- Stretch GORE-TEX® fabric covering upper back, shoulders, sleeve area, elbows, base of hood & hood pod
- Recycled fleece lined collar
- Unlined for ease of movement
- Adjustable double cuff design giving virtual drysuit protection
- Articulated elbows & underarms
- Large recycled fleece lined handwarmer tunnel pocket with Velcro closures
- Pouch pocket with water deflecting inner lip and secure Velcro closure
- Velcro adjustable neoprene waistband to prevent garment riding up
- Side waist adjuster to reduce bulk at the centre front
- Scooped skirt with adjustable hem tensioner
- Facility to attach lifejacket
- Musto prismatic reflectors
- Heavyweight Donnington outer fabric
- Riri zip



SH1687PLAT

HPX TROUSERS

Platinum



COLOUR VARIANTS



Gold



Red

SIZE

MB, LB, XS, S, M, L, XL, XXL

Home // SAILING // YACHTING TECHNICAL // HPX // HPX TROUSERS

PRODUCT SPECIFICATIONS

- Gore-Tex® Pro Shell (Ocean Technology) laminate
- Velcro adjustable 'non slip' wide elasticated braces
- High chest fit for extra protection
- Elasticated underarms
- Multi-tool attachment facility
- Unlined for easy access & speed of drying
- Heavy duty 2-way zip & high waterproof gusset
- Waist adjusters
- Articulated knees & seats
- Durable seat & knee patches with internal abrasion free seams
- Chest recycled fleece lined handwarmer pockets with mesh drainage
- Thigh pocket with water deflecting inner lip
- Extra wide Velcro adjustable ankle closures
- Heavyweight Donnington outer fabric



SH1604GD

HPX OCEAN DRYSUIT

Gold



COLOUR VARIANTS

SIZE

S, M, L, XL, XXL

Home // SAILING // YACHTING TECHNICAL // HPX // HPX OCEAN DRYSUIT

PRODUCT SPECIFICATIONS

- Gore-Tex® Pro Shell (Ocean Technology) laminate
- Provides 2-3 hours survival time in water of 5°C
- Metal Dynat diagonal front zip
- Internal braces for optimum fit
- Roll-away fluorescent hood with width & height adjustment
- Recycled fleece lined collar
- Spume visor to protect face
- Oral inflator for insulation
- Articulated elbows & underarms
- Protected latex neck & wrist seals
- Chest handwarmer pockets
- Thigh pocket with water deflecting inner lip
- 500 denier Cordura seat & knee patches
- Extra wide adjustable ankle cuffs
- Musto prismatic reflectors



SM1511RDDG

MPX OFFSHORE JACKET

Red / Dark Grey



COLOUR VARIANTS



Black / Dark Grey



Gold / Dark Grey



Platinum / Dark Grey

SIZE

S,M,L,XL,XXL

Home // SAILING // YACHTING TECHNICAL // MPX // MPX OFFSHORE JACKET

PRODUCT SPECIFICATIONS

- GORE-TEX® Performance Shell (Coastal Technology) laminate
- Roll-away fluorescent hood with width, height & face adjustment
- Spume visor to protect face
- Recycled fleece lined collar
- Articulated elbows & underarms
- Adjustable cuff design giving virtual drysuit cuff protection
- Double storm flap with drainage channel covering 2-way zip
- Inner security pocket
- Handwarmer pockets with pull out to dry recycled fleece lining
- Large self-draining cargo pockets
- Adjustable hem tensioner
- Facility to attach lifejacket
- Reflective piping
- Musto prismatic reflectors



SM151W1RDDG

MPX OFFSHORE JKT FW

Red / Dark Grey



COLOUR VARIANTS

SIZE

8,10,12,14,16,18

Home // SAILING // YACHTING TECHNICAL // MPX // MPX OFFSHORE JKT FW

PRODUCT SPECIFICATIONS

- GORE-TEX® Performance Shell (Coastal Technology) laminate
- Roll-away fluorescent hood with width, height & face adjustment
- Spume visor to protect face
- Recycled fleece lined collar
- Articulated elbows & underarms
- Adjustable double cuff design giving virtual drysuit cuff protection
- Double storm flap with drainage channel covering 2-way zip
- Inner security pocket
- Handwarmer pockets with pull out to dry recycled fleece lining
- Large self-draining cargo pockets
- Adjustable hem tensioner
- Facility to attach lifejacket
- Reflective piping
- Musto prismatic reflectors



SM0021R

MPX RACE JACKET

Red



COLOUR VARIANTS



Black



Platinum

SIZE

XS,S,M,L,XL,XXL

Home // SAILING // YACHTING TECHNICAL // MPX // MPX RACE JACKET

PRODUCT SPECIFICATIONS

- GORE-TEX® Performance Shell (Coastal Technology) laminate
- Roll-away, detachable, fluorescent peaked reefing hood
- Recycled fleece lined collar
- Stretch GORE-TEX® fabric covering upper back, shoulder & sleeve area
- Articulated elbows & underarms
- Smooth non-abrasive stretch wrist seals with Velcro adjustment
- Water resistant front zip
- Chest & side pockets with water resistant zips
- Inner security pocket
- Scooped back hem
- Adjustable hem tensioner



SM0031R

MPX RACE SMOCK

Red



COLOUR VARIANTS



Black



Platinum

SIZE

XS,S,M,L,XL,XXL

Home // SAILING // YACHTING TECHNICAL // MPX // MPX RACE SMOCK

PRODUCT SPECIFICATIONS

- GORE-TEX® Performance Shell (Coastal Technology) laminate
- Stretch GORE-TEX® fabric covering upper back
- Smooth non-abrasive stretch neck seals with Velcro adjustment
- Smooth non-abrasive stretch wrist seals with Velcro adjustment
- Side opening with waterproof gusset
- Articulated elbows
- Articulated underarms
- Side pockets with water resistant zips
- Velcro adjustable neoprene waistband to prevent garment riding up



SM0050R

Home // SAILING // YACHTING TECHNICAL // MPX // MPX RACE DRY SMOCK

MPX RACE DRY SMOCK

Red



COLOUR VARIANTS



Black



Platinum

SIZE

S,M,L,XL,XXL

PRODUCT SPECIFICATIONS

- GORE-TEX® Performance Shell (Coastal Technology) laminate
- Stretch GORE-TEX® fabric covering upper back
- Rubber neck and wrist seal for drysuit protection
- Articulated elbows
- Articulated underarms
- Side pockets with water resistant zips
- Velcro adjustable neoprene waistband to prevent garment riding up



SM1264PLDG

Home // SAILING // YACHTING TECHNICAL // MPX // MPX OFFSHORE RACE JKT

MPX OFFSHORE RACE JKT

Platinum / Dark Grey



COLOUR VARIANTS



Black / Dark Grey



Red / Dark Grey

SIZE

S,M,L,XL,XXL

PRODUCT SPECIFICATIONS

- GORE-TEX® Performance Shell (Coastal Technology) laminate
- Roll-away fluorescent hood with width, height & face adjustment
- Recycled fleece lined collar
- Articulated elbows & underarms
- Adjustable double cuff design giving virtual drysuit cuff protection
- Storm flap with drainage channel covering 2-way zip
- Handwarmer pockets with pull out to dry recycled fleece lining
- Inner security pocket
- Two large self-draining cargo pockets
- Adjustable hem tensioner
- Facility to attach lifejacket
- Musto prismatic reflectors
- Unlined for ease of movement
- Scooped back hem



SM1462RDDG

MPX OFFSHORE RACE SMOCK

Red / Dark Grey



COLOUR VARIANTS



Black / Dark Grey



Platinum / Dark Grey

SIZE

S,M,L,XL,XXL

Home // SAILING // YACHTING TECHNICAL // MPX // MPX OFFSHORE RACE SMOCK

PRODUCT SPECIFICATIONS

- GORE-TEX® Performance Shell (Coastal Technology) laminate
- Roll-away fluorescent hood with width, height & face adjustment
- Recycled fleece lined collar
- Articulated elbows & underarms
- Unlined for ease of movement
- Non abrasive stretch fabric neck seal with Velcro adjustment
- Adjustable double cuff design giving virtual drysuit cuff protection
- Tunnel pocket with Velcro closures
- Pouch pocket with water deflecting inner lip and secure Velcro closure
- Velcro adjustable neoprene waistband to prevent garment riding up
- Musto prismatic reflectors



SM1504GDDG

MPX TROUSERS

Gold / Dark Grey



COLOUR VARIANTS



Black / Dark Grey



Platinum / Dark Grey



Red / Dark Grey

SIZE

MB, LB, S, M, L, XL, XXL

Home // SAILING // YACHTING TECHNICAL // MPX // MPX TROUSERS

PRODUCT SPECIFICATIONS

- GORE-TEX® Performance Shell (Coastal Technology) laminate
- Velcro adjustable 'non slip' wide elasticated braces
- High chest fit for extra protection
- Elasticated underarms
- Multi-tool attachment facility
- Unlined for easy access & speed of drying
- Heavy duty 2-way zip & high waterproof gusset
- Twin waist adjusters
- Articulated Knees
- 500 denier Cordura seat & knee patches with internal abrasion free seams
- Chest Handwarmer pockets with water deflecting inner lip
- Extra wide Velcro adjustable ankle closures



SM150W1RDDG

Home // SAILING // YACHTING TECHNICAL // MPX // MPX TROUSERS FW

MPX TROUSERS FW

Red / Dark Grey



COLOUR VARIANTS

SIZE

8,10,12,14,16,18

PRODUCT SPECIFICATIONS

- GORE-TEX® Performance Shell (Coastal Technology) laminate
- Velcro adjustable 'non slip' wide elasticated braces
- High chest fit for extra protection
- Elasticated underarms
- Multi-tool attachment facility
- Unlined for easy access & speed of drying
- Heavy duty 2-way zip & high waterproof gusset
- Twin waist adjusters
- Articulated Knees
- 500 denier Cordura seat & knee patches with internal abrasion free seams
- Chest Handwarmer pockets with water deflecting inner lip
- Extra wide Velcro adjustable ankle closures



SM0011RDDG

Home // SAILING // YACHTING TECHNICAL // MPX // MPX RACE SALOPETTES

MPX RACE SALOPETTES

Red / Dark Grey



COLOUR VARIANTS



Black / Dark Grey

Platinum / Dark Grey

SIZE

XS,S,M,L,XL,XXL

PRODUCT SPECIFICATIONS

- GORE-TEX® Performance Shell (Coastal Technology) laminate
- Nylatex Stretch shoulders for extra comfort
- High chest fit for extra protection
- Elasticated underarms
- Multi-tool attachment facility
- Unlined for easy access & speed of drying
- 2-Way water resistant zip & waterproof gusset
- Waist adjusters
- 500 denier Cordura seat & knee patches with internal abrasion free seams
- Thigh pocket with water deflecting inner lip
- Smooth non-abrasive stretch ankle seals with Velcro adjustable



SM1431RDDG

Home // SAILING // YACHTING TECHNICAL // MPX // MPX DRYSUIT

MPX DRYSUIT

Red / Dark Grey



PRODUCT SPECIFICATIONS

- GORE-TEX® Performance Shell (Coastal Technology) laminate
- Latex neck, wrist & feet protected by fabric tabs to reduce UVA damage & tears
- Metal Dynat diagonal front zip
- Internal braces for optimum fit
- 500 denier Cordura seat & knee patches with internal abrasion free seams
- Waist belt with adjustable buckle closure
- Thigh pocket with water deflecting inner lip
- Articulated elbows & knees

COLOUR VARIANTS



Black / Dark Grey

SIZE

S,M,L,XL,XXL



SL0010DGY

Home // SAILING // YACHTING TECHNICAL // LPX // LPX JACKET

LPX JACKET

Dark Grey



PRODUCT SPECIFICATIONS

- GORE-TEX® Paclite Shell
- Splashproof zips on front and pockets
- Full arm articulation for ease of movement
- Forearm and lower back reinforcement
- Elasticated double tensioning drawstring at waist
- Velcro fastening wrist closures
- Two front zipped pockets with drainage
- Rubber badge fabric branding & owners label
- Reflective logo on back of collar

COLOUR VARIANTS



Platinum

SIZE

S,M,L,XL,XXL



SL0020DGY

Home // SAILING // YACHTING TECHNICAL // LPX // LPX WAIST HIGH TROUSERS

LPX WAIST HIGH TROUSERS

Dark Grey



COLOUR VARIANTS



Platinum

SIZE

S,M,L,XL,XXL

PRODUCT SPECIFICATIONS

- GORE-TEX® Paclite Shell
- Waist high trousers with popper & zip fly
- Keprotec, incorporating Kevlar, reinforcement on seat, knees and ankles
- Velcro fastening ankle closures
- Reflective logo on centre back belt loop
- Rubber badge fabric branding & owners label

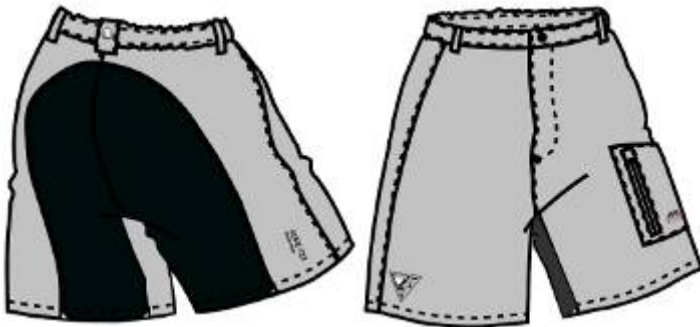


SL0030PLAT

Home // SAILING // YACHTING TECHNICAL // LPX // LPX SHORTS

LPX SHORTS

Platinum



COLOUR VARIANTS



Dark Grey

SIZE

S,M,L,XL,XXL

PRODUCT SPECIFICATIONS

- GORE-TEX® Paclite Shell
- Splashproof pocket zips
- Popper and zip fly & belt loops
- Concealed internal hem aperture adjuster
- Reflective logo on centre back belt loop
- Rubber badge fabric branding & owners label
- Keprotec, incorporating Kevlar, reinforcement on seat



SB0031RDDG

Home // SAILING // YACHTING TECHNICAL // BR2 // BR2 JACKET

BR2 JACKET

Red / Dark Grey



COLOUR VARIANTS



Black / Platinum



Dark Navy / Dark Grey

SIZE

S,M,L,XL,XXL

PRODUCT SPECIFICATIONS

- Waterproof
- BR2 fabric for extra breathability plus durability
- Roll-away fluorescent hood with width & height adjustment
- Fleece lined collar
- Articulated elbows & underarms
- Adjustable cuff design giving virtual drysuit cuff protection
- Double storm flap with drainage channel covering 2-way zip
- Chest handwarmer pockets & inner security pocket
- Large self-draining cargo pockets
- Adjustable hem tensioner
- Facility to attach lifejacket
- Internal glasses pocket with microfibre cleaning cloth
- Musto prismatic reflectors



SB0040RDDG

Home // SAILING // YACHTING TECHNICAL // BR2 // BR2 TROUSERS

BR2 TROUSERS

Red / Dark Grey



COLOUR VARIANTS



Black / Dark Grey



Dark Navy / Dark Grey

SIZE

S,M,L,XL,XXL

PRODUCT SPECIFICATIONS

- Waterproof
- BR2 fabric for extra breathability plus durability
- Velcro adjustable 'non slip' wide elasticated braces
- High chest fit for extra protection
- Elasticated underarms
- Multi-tool attachment facility
- Heavy duty 2-way zip & high waterproof gusset
- Waist adjusters
- Articulated Knees
- Reinforced seat & knee patches with internal abrasion free seams
- Chest handwarmer pockets
- Extra wide Velcro adjustable ankle closures



SB1292BLDG

Home // SAILING // YACHTING TECHNICAL // BR1 // BR1 CHANNEL JACKET

BR1 CHANNEL JACKET

Black / Dark Grey



COLOUR VARIANTS



Navy / Platinum



Red / Dark Grey

SIZE

S,M,L,XL,XXL

PRODUCT SPECIFICATIONS

- Waterproof & breathable
- Roll-away fluorescent hood with width, height & face adjustment
- Fleece lined collar
- Articulated elbows
- Adjustable double cuff design giving virtual drysuit cuff protection
- Double storm flap with drainage channel covering 2-way zip
- Large self-draining cargo pockets
- Adjustable hem tensioner
- Facility to attach lifejacket
- Internal glasses pocket with microfibre cleaning cloth
- Musto prismatic reflectors
- Handwarmer pockets & inner security pocket



SB129W2NPL

Home // SAILING // YACHTING TECHNICAL // BR1 // BR1 CHANNEL JACKET FW

BR1 CHANNEL JACKET FW

Navy / Platinum



COLOUR VARIANTS



Red / Dark Grey

SIZE

8,10,12,14,16

PRODUCT SPECIFICATIONS

- Waterproof & breathable
- Roll-away fluorescent hood with width, height & face adjustment
- Fleece lined collar
- Articulated elbows
- Adjustable double cuff design giving virtual drysuit cuff protection
- Double storm flap with drainage channel covering 2-way zip
- Handwarmer pockets & inner security pocket
- Large self-draining cargo pockets
- Adjustable hem tensioner
- Facility to attach lifejacket
- Internal glasses pocket with microfibre cleaning cloth
- Musto prismatic reflectors



SB0051BLDG

Home // SAILING // YACHTING TECHNICAL // BR1 // BR1 INSHORE RACE JACKET

BR1 INSHORE RACE JACKET

Black / Dark Grey



COLOUR VARIANTS



Navy / Platinum



Red / Platinum

SIZE

S,M,L,XL,XXL

PRODUCT SPECIFICATIONS

- Waterproof & breathable
- Roll-away fully adjustable peaked hood
- Fleece lined collar
- Articulated elbows
- Adjustable double cuff design giving virtual drysuit cuff protection
- Water resistant front zip
- Water resistant zipped fleece lined handwarmer pockets
- Inner security pocket
- Adjustable hem tensioner



SB005W1NPL

Home // SAILING // YACHTING TECHNICAL // BR1 // BR1 INSHORE RACE JACKET FW

BR1 INSHORE RACE JACKET FW

Navy / Platinum



COLOUR VARIANTS



Powder Blue /
Platinum



Red / Platinum

SIZE

8,10,12,14,16

PRODUCT SPECIFICATIONS

- Waterproof & breathable
- Roll-away fully adjustable peaked hood
- Fleece lined collar
- Articulated elbows
- Adjustable double cuff design giving virtual drysuit cuff protection
- Water resistant front zip
- Water resistant zipped fleece lined handwarmer pockets
- Inner security pocket
- Adjustable hem tensioner



SB1224DGW

Home // SAILING // YACHTING TECHNICAL // BR1 // BR1 INSHORE JACKET

BR1 INSHORE JACKET

Dark Grey / White



COLOUR VARIANTS



Navy / Platinum



Red / Dark Grey

SIZE

S,M,L,XL,XXL

PRODUCT SPECIFICATIONS

- Waterproof & breathable
- Roll-away fully adjustable peaked hood
- Fleece lined collar
- Articulated elbows
- Adjustable double cuff design giving virtual drysuit cuff protection
- Double storm flap with drainage channel covering zip
- Zipped fleece lined handwarmer pockets
- Inner security pocket
- Adjustable hem tensioner



SB1232RDDG

Home // SAILING // YACHTING TECHNICAL // BR1 // BR1 TROUSERS

BR1 TROUSERS

Red / Dark Grey



COLOUR VARIANTS



Black / Dark Grey



Dark Grey / Dark Grey



Navy / Dark Grey

SIZE

JS,JM,JL,MB,XS,S,M,L,XL,XXL

PRODUCT SPECIFICATIONS

- Waterproof & breathable
- Velcro adjustable 'non slip' wide elasticated braces
- Elasticated underarms
- Multi-tool attachment facility
- Heavy duty 2-way zip & high waterproof gusset
- Articulated Knees
- 600 denier seat & knee patches with internal abrasion free seams
- Velcro adjustable ankle cuffs
- Thigh pocket with water deflecting inner lip
- Fully lined



SB123W2PWBN

BR1 TROUSERS FW

Powder Blue / Navy



COLOUR VARIANTS



Navy / Navy



Red / Dark Grey

SIZE

8,10,12,14,16,18

PRODUCT SPECIFICATIONS

- Waterproof & breathable
- Velcro adjustable 'non slip' wide elasticated braces
- Elasticated underarms
- Multi-tool attachment facility
- Heavy duty zip & high waterproof gusset
- Articulated Knees
- 600 denier seat & knee patches with internal abrasion free seams
- Velcro adjustable ankle cuffs
- Thigh pocket with water deflecting inner lip
- Fully lined



SB2103NN

BREATHABLE CARIBBEAN JACKET

Navy / Navy



COLOUR VARIANTS



Black / Platinum



Platinum / Black



Red / Platinum

SIZE

S,M,L,XL,XXL

PRODUCT SPECIFICATIONS

- Waterproof & breathable
- Tough durable ripstop fabric
- Mesh lining
- Taped seams
- Roll-away peaked hood
- Two way front zip
- Adjustable cuffs
- Two external zipped pockets, internal security pocket
- Scooped back hem with elasticated drawcord
- Reflective Musto logo on collar
- Internal shock cord and cord cap for headphones



SB210W3NPL

Home // SAILING // YACHTING TECHNICAL // BREATHABLE CARIBBEAN / WINDWARD // BREATHABLE CARIBBEAN JKT FW

BREATHABLE CARIBBEAN JKT FW

Navy / Platinum



PRODUCT SPECIFICATIONS

- Waterproof & breathable
- Tough durable ripstop fabric
- Mesh lining
- Taped seams
- Roll-away peaked hood
- Two way front zip
- Adjustable cuffs
- Two external zipped pockets, internal security pocket
- Scooped back hem with elasticated drawcord
- Reflective Musto logo on collar
- Internal shock cord and cord cap for headphones

COLOUR VARIANTS



Black / Platinum



Platinum / Black



Powder Blue / Navy

SIZE

8,10,12,14,16,18



SB2123BL

Home // SAILING // YACHTING TECHNICAL // BREATHABLE CARIBBEAN / WINDWARD // BREATHABLE CARIBBEAN GILET

BREATHABLE CARIBBEAN GILET

Black



PRODUCT SPECIFICATIONS

- Showerproof & Windproof
- Tough durable ripstop fabric
- Mesh lining
- Two way front zip
- Two external zipped pockets, internal security pocket
- Scooped back hem with elasticated drawcord
- Reflective Musto logo on collar
- Internal shock cord and cord cap for headphones

COLOUR VARIANTS



Navy / Navy



Platinum

SIZE

S,M,L,XL,XXL



SB2112BL

Home // SAILING // YACHTING TECHNICAL // BREATHABLE CARIBBEAN / WINDWARD // BREATHABLE CARIBBEAN TROUSERS

BREATHABLE CARIBBEAN TROUSERS

Black



COLOUR VARIANTS



Navy

SIZE

XS,S,M,L,XL,XXL

PRODUCT SPECIFICATIONS

- Waterproof & breathable
- Half elasticated waist band with belt loops
- Side pockets
- Seat patch
- Zipped Fly
- Elasticated zipped ankles with gussets
- Fully lined
- Taped seams



SB2132BLPL

Home // SAILING // YACHTING TECHNICAL // BREATHABLE CARIBBEAN / WINDWARD // BREATHABLE CARIBBEAN SHORTS

BREATHABLE CARIBBEAN SHORTS

Black / Platinum



COLOUR VARIANTS



Navy

SIZE

S,M,L,XL,XXL

PRODUCT SPECIFICATIONS

- Waterproof & breathable
- Half elasticated waist band with belt loops
- Seat patch
- Zipped Fly
- Fully lined
- Taped seams



SB2182BLPL

Home // SAILING // YACHTING TECHNICAL // BREATHABLE CARIBBEAN / WINDWARD // BREATHABLE WINDWARD JACKET

BREATHABLE WINDWARD JACKET

Black / Platinum



COLOUR VARIANTS



Navy / Navy



Platinum / Black



Red / Platinum

SIZE

S,M,L,XL,XXL

PRODUCT SPECIFICATIONS

- Waterproof & breathable
- Tough durable ripstop fabric
- Microfleece lining & top collar
- Taped seams
- Roll-away peaked hood
- Two way front zip
- Adjustable cuffs
- Two external zippered pockets, internal security pocket
- Scooped back hem with elasticated drawcord
- Reflective Musto logo on collar
- Internal shock cord and cord cap for headphones



SB218W2BLPL

Home // SAILING // YACHTING TECHNICAL // BREATHABLE CARIBBEAN / WINDWARD // BREATHABLE WINDWARD JKT FW

BREATHABLE WINDWARD JKT FW

Black / Platinum



COLOUR VARIANTS



Navy / Platinum



Platinum / Black



Powder Blue / Navy

SIZE

8,10,12,14,16,18

PRODUCT SPECIFICATIONS

- Waterproof & breathable
- Tough durable ripstop fabric
- Microfleece lining & top collar
- Taped seams
- Roll-away peaked hood
- Two way front zip
- Adjustable cuffs
- Two external zippered pockets, internal security pocket
- Scooped back hem with elasticated drawcord
- Reflective Musto logo on collar
- Internal shock cord and cord cap for headphones



SB2192BLPL

Home // SAILING // YACHTING TECHNICAL // BREATHABLE CARIBBEAN / WINDWARD // BREATHABLE WINDWARD GILET

BREATHABLE WINDWARD GILET

Black / Platinum



COLOUR VARIANTS



Navy / Navy



Platinum / Black

SIZE

S,M,L,XL,XXL

PRODUCT SPECIFICATIONS

- Showerproof and breathable
- Tough durable ripstop fabric
- Microfleece lining & top collar
- Two way front zip
- Two external zippered pockets, internal security pocket
- Scooped back hem with elasticated drawcord
- Reflective Musto logo on collar
- Internal shock cord and cord cap for headphones

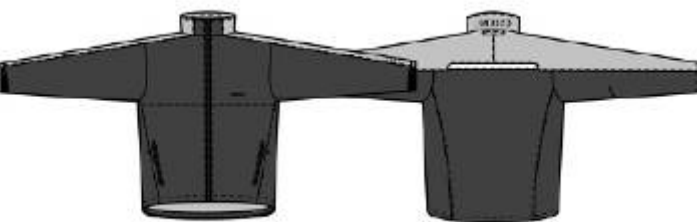


SB0061CAPL

Home // SAILING // YACHTING TECHNICAL // BREATHABLE CARIBBEAN / WINDWARD // BREATHABLE SOFT SHELL RACE JKT

BREATHABLE SOFT SHELL RACE JKT

Carbon / Platinum



COLOUR VARIANTS



Navy / Carbon



Platinum / Carbon

SIZE

S,M,L,XL,XXL

PRODUCT SPECIFICATIONS

- Waterproof & breathable
- Soft Shell fabric
- Taped seams
- Double ended splashproof zip
- Moulded rubber cuff adjuster tabs
- Zipped external pockets
- Adjustable elasticated shock cord running through them
- New design



SE0020BL

EVOLUTION SOFT SHELL JACKET

Black



COLOUR VARIANTS

SIZE

S,M,L,XL,XXL

Home // SAILING // YACHTING TECHNICAL // MEN'S EVOLUTION // EVOLUTION SOFT SHELL JACKET

PRODUCT SPECIFICATIONS

- Durably waterproof, highly breathable, windproof
- GORE-TEX® Soft Shell outer with flannel backing
- Showerproof, windproof zips throughout
- Stormflap with zip guard
- Self fabric cuffs with rubber tab/Velcro adjustment
- Scoop back hem with drawcord
- Side hem mesh drainage sections
- Articulated elbows
- Two front lower & chest patch pocket
- GORE-TEX® Soft Shell & New Evolution external branding



SE0010BL

EVOLUTION JACKET

Black



COLOUR VARIANTS

SIZE

S,M,L,XL,XXL

Home // SAILING // YACHTING TECHNICAL // MEN'S EVOLUTION // EVOLUTION JACKET

PRODUCT SPECIFICATIONS

- Durably waterproof, highly breathable, windproof
- GORE-TEX® 2 layer Performance Shell
- Recycled Polartec® Classic 200™ fleece body lining & single sided fleece sleeve lining
- Fleece lined front pockets
- Fleece lined collar
- Showerproof & windproof zips throughout
- Self fabric cuffs with rubber tab/Velcro adjustment
- Inner pocket with headphone facility
- Centre front mesh drainage sections
- Scooped back hem with drawcord
- GORE-TEX® Polartec® & New Evolution external branding
- Articulated elbows
- Zip guard



SE0040BL

EVOLUTION WINDJAMMER JKT

Black



COLOUR VARIANTS

SIZE

S,M,L,XL,XXL

Home // SAILING // YACHTING TECHNICAL // MEN'S EVOLUTION // EVOLUTION WINDJAMMER JKT

PRODUCT SPECIFICATIONS

- 100% polyester Soft Shell outer with fleece backing
- Windproof
- Windjammer external branding
- Showerproof & windproof zips throughout
- Two front pockets
- Scooped back hem with drawcord
- New Evolution branding



SE0030BL

EVOLUTION LITE JKT

Black



COLOUR VARIANTS

SIZE

S,M,L,XL,XXL

Home // SAILING // YACHTING TECHNICAL // MEN'S EVOLUTION // EVOLUTION LITE JKT

PRODUCT SPECIFICATIONS

- GORE-TEX® Paclite Shell
- Durably waterproof, extremely breathable
- Lightweight & versatile
- Two front lower pockets
- Showerproof & windproof zips throughout
- GORE-TEX® Paclite & New Evolution external branding



SE0050BL

EVOLUTION FLEECE JACKET

Black



COLOUR VARIANTS

SIZE

S,M,L,XL,XXL

Home // SAILING // YACHTING TECHNICAL // MEN'S EVOLUTION // EVOLUTION FLEECE JACKET

PRODUCT SPECIFICATIONS

- Recycled Polartec® Classic 200™
- Centre front zip with rolover chin guard
- Lycra trim to hem & cuffs
- Cover stitch detail throughout
- Under arm panels for articulation
- New Evolution external branding



SE0060BL

EVOLUTION FLEECE SMOCK

Black



COLOUR VARIANTS

SIZE

S,M,L,XL,XXL

Home // SAILING // YACHTING TECHNICAL // MEN'S EVOLUTION // EVOLUTION FLEECE SMOCK

PRODUCT SPECIFICATIONS

- Recycled Polartec® Classic 200™
- Short front zip with rolover chin guard
- Lycra trim to hem & cuffs
- Cover stitch detail throughout
- Under arm panels for articulation
- New Evolution and Polartec® external branding



SE0080BL

EVOLUTION MICRO FLEECE

Black



COLOUR VARIANTS

SIZE

S,M,L,XL,XXL

Home // SAILING // YACHTING TECHNICAL // MEN'S EVOLUTION // EVOLUTION MICRO FLEECE

PRODUCT SPECIFICATIONS

- Polartec® Micro Fleece
- Light and soft handle
- Lycra trim to hem & cuffs
- Polartec® & New Evolution external branding



SE0070BL

EVOLUTION FLEECE GILET

Black



COLOUR VARIANTS

SIZE

S,M,L,XL,XXL

Home // SAILING // YACHTING TECHNICAL // MEN'S EVOLUTION // EVOLUTION FLEECE GILET

PRODUCT SPECIFICATIONS

- Recycled Polartec® Classic 200™
- Lycra trim hem & arm holes
- Cover stitch detail throughout
- Polartec® & New Evolution external branding



SE0140BL

EVOLUTION TECHNICAL TROUSERS

Black



COLOUR VARIANTS



Light Stone



Titanium

SIZE

LONG/REG 30,32,34,36,38,40

PRODUCT SPECIFICATIONS

- 94% Nylon- 6% Spandex- Nano wicking fabric
- Fast drying
- Keprotec, incorporating Kevlar, reinforcement on seat, knees and ankles
- Adjustable waistband
- Two front slightly curved pockets
- Thigh pockets zip fastening and mobile phone section
- New Evolution branding on left thigh pocket



SE0150W

EVOLUTION TECHNICAL SHORTS

White



COLOUR VARIANTS



Black



Light Stone



Titanium

SIZE

30,32,34,36,38,40

PRODUCT SPECIFICATIONS

- 94% Nylon- 6% Spandex- Nano wicking fabric
- Fast drying
- Keprotec, incorporating Kevlar, reinforcement on seat
- Adjustable waistband
- Two front slightly curved pockets
- Thigh pockets zip fastening and mobile phone section
- New Evolution external branding



SE0240BL

EVOLUTION SHORTS

Black



COLOUR VARIANTS

SIZE

30,32,34,36,38,40

Home // SAILING // YACHTING TECHNICAL // MEN'S EVOLUTION // EVOLUTION SHORTS

PRODUCT SPECIFICATIONS

- 94% Nylon- 6% Spandex- Nano wicking fabric
- Adjustable waistband
- Curved front pockets
- Thigh pockets zip fastening and mobile phone section
- Two back patch pockets
- New Evolution external branding



SE0230BLTI

EVOLUTION BOARD SHORTS

Black / Titanium



COLOUR VARIANTS

SIZE

S,M,L,XL,XXL

Home // SAILING // YACHTING TECHNICAL // MEN'S EVOLUTION // EVOLUTION BOARD SHORTS

PRODUCT SPECIFICATIONS

- 100% nylon
- Mesh inner brief
- New Evolution external branding



SE0220BLSI

TECHNICAL SHORTS

Black / Silver



COLOUR VARIANTS

SIZE

XS,S,M,L,XL,XXL

Home // SAILING // YACHTING TECHNICAL // MEN'S EVOLUTION // TECHNICAL SHORTS

PRODUCT SPECIFICATIONS

- 100% polyester, 145gms
- Permanent moisture management
- High comfort levels
- Fast wicking
- Soft elastic at the waist for additional comfort
- Buttonfly
- Contrast colour section at the hem
- SPF40 branding
- Anti bacterial coating
- New Evolution external branding



SE0190BLSI

TECHNICAL T SHIRT

Black / Silver



COLOUR VARIANTS



Silver / White



White / Silver

Home // SAILING // YACHTING TECHNICAL // MEN'S EVOLUTION // TECHNICAL T SHIRT

PRODUCT SPECIFICATIONS

- 100% polyester, 145gms
- Permanent moisture management
- High comfort levels
- Fast wicking
- Contrast colour under arm and side panel
- Flat lock seams for extra comfort
- SPF40 branding
- Anti bacterial coating
- New Evolution branding



SIZE

XS,S,M,L,XL,XXL

SE0180BLSI

TECHNICAL LONG SLEEVED TOP

Black / Silver



COLOUR VARIANTS



Silver / White



White / Silver

SIZE

XS,S,M,L,XL,XXL

PRODUCT SPECIFICATIONS

- 100% polyester, 145gms
- Permanent moisture management
- High comfort levels
- Fast wicking
- Contrast colour under arm and side panel
- Flat lock seams for extra comfort
- SPF40 branding
- Anti bacterial coating
- New Evolution branding



SE0200W

TECHNICAL POLO SHIRT

White



COLOUR VARIANTS



Black



Silver

SIZE

XS,S,M,L,XL,XXL

PRODUCT SPECIFICATIONS

- 100% polyester, 145gms
- Permanent moisture management
- High comfort levels
- Fast wicking
- Contrast colour tipping on collar & cuffs
- Flat lock seams for extra comfort
- SPF40 branding
- Anti bacterial coating
- New Evolution external branding



SE0090W

Home // SAILING // YACHTING TECHNICAL // LADIES EVOLUTION // EVOLUTION SOFT SHELL JACKET FW

EVOLUTION SOFT SHELL JACKET FW

White



COLOUR VARIANTS



Black

SIZE

8,10,12,14,16,18

PRODUCT SPECIFICATIONS

- Durable waterproof, highly breathable & windproof
- GORE-TEX® Soft Shell outer with flannel backing
- Showerproof, windproof zips throughout
- Red zip guard with chin guard
- Self fabric cuffs with rubber tab/Velcro adjustment
- Side hem mesh drainage sections
- Articulated elbows
- Scooped back hem with drawcord
- GORE-TEX® Soft Shell & New Evolution external branding



SE0110BL

Home // SAILING // YACHTING TECHNICAL // LADIES EVOLUTION // EVOLUTION WINDJAMMER JKT FW

EVOLUTION WINDJAMMER JKT FW

Black



COLOUR VARIANTS

SIZE

8,10,12,14,16,18

PRODUCT SPECIFICATIONS

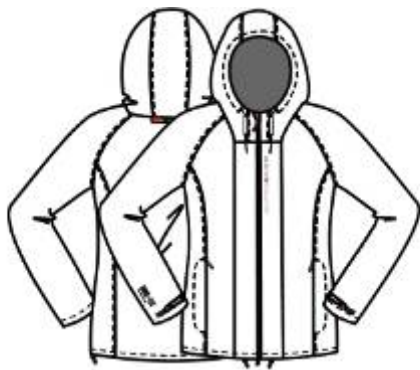
- 100% polyester Soft Shell outer with fleece backing
- Windproof
- Windjammer external branding
- Showerproof & windproof zips throughout
- Contrast red zip guard & garages
- Two front pockets
- Scooped back hem with drawcord
- New Evolution branding



SE0100W

EVOLUTION LITE JKT FW

White



COLOUR VARIANTS



Black

SIZE

8,10,12,14,16,18

Home // SAILING // YACHTING TECHNICAL // LADIES EVOLUTION // EVOLUTION LITE JKT FW

PRODUCT SPECIFICATIONS

- GORE-TEX® Paclite Shell
- Durably waterproof, extremely breathable
- Large attached seam taped hood
- Lightweight, versatile
- Two front lower pockets
- Showerproof & windproof zips throughout
- Contrast red zip guard with chin guard
- GORE-TEX® Paclite & New Evolution external branding



SE0120W

EVOLUTION FLEECE JACKET FW

White



COLOUR VARIANTS



Black

SIZE

8,10,12,14,16,18

Home // SAILING // YACHTING TECHNICAL // LADIES EVOLUTION // EVOLUTION FLEECE JACKET FW

PRODUCT SPECIFICATIONS

- Recycled Polartec® Classic 200™
- Full length centre front zip with guard
- Lycra binding on cuffs and hem
- Vertical side pockets with zip fastening
- Cover stitch detail throughout
- New Evolution embroidery along centre front zip
- Polartec® external embroidery



SE0130W

EVOLUTION MICRO FLEECE FW

White



COLOUR VARIANTS



Black

SIZE

8,10,12,14,16,18

PRODUCT SPECIFICATIONS

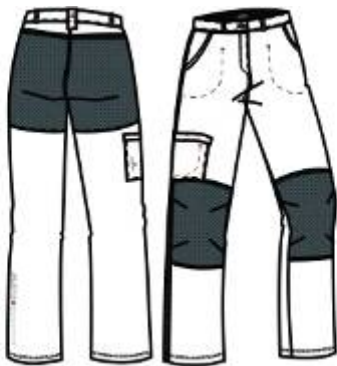
- Polartec® Classic Micro
- Light and soft handle
- External back Evolution embroidery
- Polartec® external embroidery
- Invisible zip on centre front neck
- New Evolution branding



SE0160W

EVOLUTION TECH TROUSERS FW

White



COLOUR VARIANTS



Black



Light Stone

SIZE

LONG/REG 8,10,12,14,16,18

PRODUCT SPECIFICATIONS

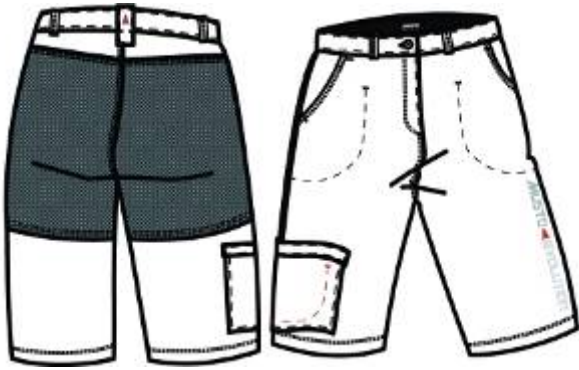
- 94% Nylon- 6% Spandex- Nano wicking fabric
- Fast drying
- Keprotec, incorporating Kevlar, reinforcement on seat, knees and ankles
- Slightly curved side pockets
- Bellows pocket with zip fastening on right thigh
- New Evolution branding running vertically down left leg



SE0170W

EVOLUTION TECHNICAL SHORTS FW

White



COLOUR VARIANTS



Black



Light Stone

SIZE

8,10,12,14,16,18

PRODUCT SPECIFICATIONS

- 94% Nylon- 6% Spandex- Nano wicking fabric
- Fast drying
- Keprotec, incorporating Kevlar, reinforcement on seat
- Slightly curved side pockets
- Bellows pocket with zip fastening on right thigh
- New Evolution print down left leg



SE0210W

EVOLUTION SUNBLOCK POLO FW

White



COLOUR VARIANTS



Black

SIZE

8,10,12,14,16,18

PRODUCT SPECIFICATIONS

- 100% polyester, 145gms
- Permanent moisture management
- High comfort levels
- Fast wicking
- Contrast colour under arm and side panel
- Flat lock seams for extra comfort
- SPF40 branding
- Anti bacterial coating



SO2005BL

DINGHY DRYSUIT

Black



COLOUR VARIANTS

SIZE

S,M,L,XL,XXL

PRODUCT SPECIFICATIONS

- Nylon Oxford 210D Breathable 3 Layer Fabric
- Dynat zip
- Elasticated internal braces with security pocket attached
- Latex boots
- 600D polyester reinforced seat and knee patches with turned back corners to aid drainage
- 2mm Neoprene glideskin collar and cuffs
- Self fabric cuff covers
- Elasticated drawn in rear waist section



SO1531BLSI

BR1 DINGHY SMOCK

Black / Silver



COLOUR VARIANTS



Red / Black



Silver / Black

PRODUCT SPECIFICATIONS

- Waterproof & breathable
- Secure neck closure with waterproof gusset
- Diagonal, zipped chest pockets for easy access when wearing buoyancy aid
- Under arm articulation for ease of movement
- Smooth non-abrasive stretch ankle seals with Velcro adjustable
- Velcro adjustable neoprene waistband to prevent garment riding up
- Water resistant zip



SIZE

S,M,L,XL,XXL

SO1593BL

BR1 DINGHY HI-FITS

Black



COLOUR VARIANTS

SIZE

XS,S,M,L,XL,XXL

PRODUCT SPECIFICATIONS

- Waterproof & breathable
- Extra high front & back for extra protection
- Velcro adjustable elasticated braces for comfort
- Elasticated underarms
- Articulated Knees
- 450 denier knee & seat patches with internal abrasion free seams
- Thigh pocket with water deflecting inner lip
- Velcro adjustable ankle cuffs



SO0030BL

FLEECE AQUA TOP

Black



COLOUR VARIANTS

SIZE

S,M,L,XL,XXL

PRODUCT SPECIFICATIONS

- Water repellent coated fleece fabric
- Matching colour, rash vest for comfort
- Matching colour flat lock seaming



SO0020BL

TURTLE NECK AQUA TOP

Black



COLOUR VARIANTS

SIZE

S,M,L,XL,XXL

Home // SAILING // YACHTING TECHNICAL // DINGHY RANGE // TURTLE NECK AQUA TOP

PRODUCT SPECIFICATIONS

- Water repellent coated fleece fabric
- Matching colour flat lock seaming
- Self fabric, adjustable high neck for extra protection



SO1060BLSI

LONG SLEEVED RASH VEST

Black / Silver



COLOUR VARIANTS



Red / Silver



White / Silver

Home // SAILING // YACHTING TECHNICAL // DINGHY RANGE // LONG SLEEVED RASH VEST

PRODUCT SPECIFICATIONS

- 88% Nylon, 12% Spandex
- Contoured seams
- High neck for extra protection and added comfort
- Scooped hem

SIZE

S,M,L,XL,XXL



SO1070BLSI

SHORT SLEEVED RASH VEST

Black / Silver



COLOUR VARIANTS



Red / Silver



White / Silver

SIZE

S,M,L,XL,XXL

Home // SAILING // YACHTING TECHNICAL // DINGHY RANGE // SHORT SLEEVED RASH VEST

PRODUCT SPECIFICATIONS

- 88% Nylon, 12% Spandex
- Contoured seams
- High neck for extra protection and added comfort
- Scooped hem



SO1001BLSI

SHORT ARM WETSUIT

Black / Silver



COLOUR VARIANTS

SIZE

S,M,L,XL,XXL

Home // SAILING // YACHTING TECHNICAL // DINGHY RANGE // SHORT ARM WETSUIT

PRODUCT SPECIFICATIONS

- 3mm neoprene
- Super stretch panelling for optimum movement
- Smooth skin chest panel
- Flat lock seaming to reduce chaffing
- Glideskin arm cuffs for extra comfort
- Anti abrasive seat, knee & shins for extra durability & comfort
- Leg length can be shortened to make the required length
- YKK Zip with long Musto branded zip pull
- Ergonomic neck closure with easy pull tab
- Wetsuit adaptor included (SO1110)



SO1011BLPB

SHORT ARM WETSUIT FW

Black / Powder Blue



COLOUR VARIANTS

SIZE

8,10,12,14,16

Home // SAILING // YACHTING TECHNICAL // DINGHY RANGE // SHORT ARM WETSUIT FW

PRODUCT SPECIFICATIONS

- Ladies cut
- 3mm neoprene
- Super stretch panelling for optimum movement
- Smooth skin chest panel
- Flat lock seaming to reduce chaffing
- Glideskin arm cuffs for extra comfort
- Anti abrasive seat, knee & shins for extra durability & comfort
- Leg length can be shortened to make the required length
- YKK Zip with long Musto branded zip pull
- Ergonomic neck closure with easy pull tab
- Wetsuit adaptor included (SO1110)



SO1020BLSI

SHORTIE WETSUIT

Black / Silver



COLOUR VARIANTS



Silver / Black

SIZE

S,M,L,XL,XXL

Home // SAILING // YACHTING TECHNICAL // DINGHY RANGE // SHORTIE WETSUIT

PRODUCT SPECIFICATIONS

- 3mm neoprene
- Super stretch panelling for optimum movement
- Smooth skin chest panel
- Flat lock seaming to reduce chaffing
- Glideskin arm & leg cuffs for extra comfort
- Anti abrasive seat for extra durability & comfort
- YKK Zip with long Musto branded zip pull
- Ergonomic neck closure with easy pull tab



SO1030BLPB

SHORTIE WETSUIT FW

Black / Powder Blue



COLOUR VARIANTS

SIZE

8,10,12,14,16

Home // SAILING // YACHTING TECHNICAL // DINGHY RANGE // SHORTIE WETSUIT FW

PRODUCT SPECIFICATIONS

- Ladies cut
- 3mm neoprene
- Super stretch panelling for optimum movement
- Smooth skin chest panel
- Flat lock seaming to reduce chaffing
- Glideskin arm & leg cuffs for extra comfort
- Anti abrasive seat for extra durability & comfort
- YKK Zip with long Musto branded zip pull
- Ergonomic neck closure with easy pull tab



SO5000BLSI

BREATHABLE HIKING PANTS

Black / Silver



COLOUR VARIANTS

SIZE

S,M,L,XL,XXL

Home // SAILING // YACHTING TECHNICAL // DINGHY RANGE // BREATHABLE HIKING PANTS

PRODUCT SPECIFICATIONS

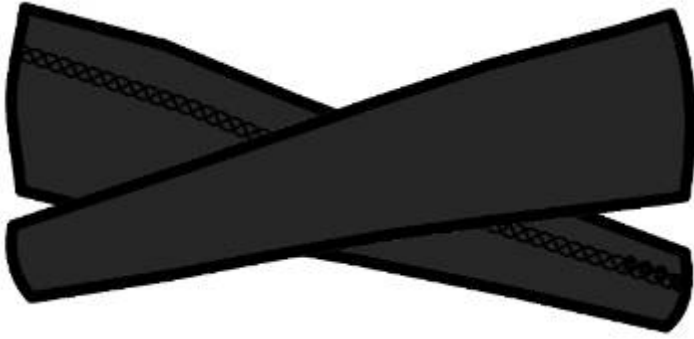
- 3mm neoprene with breathable airflow panels
- Super stretch panelling for optimum movement
- Taped outer seams for extra durability
- Glideskin leg cuffs for extra comfort
- Anti abrasive seat for extra durability & comfort
- Stiff batton patches on back of thighs
- 3/4 Length
- Cross over shoulder straps
- Low cut front



SO1110BL

WETSUIT ADAPTOR

Black



COLOUR VARIANTS

SIZE

S,M,L,XL,XXL

Home // SAILING // YACHTING TECHNICAL // DINGHY RANGE // WETSUIT ADAPTOR

PRODUCT SPECIFICATIONS

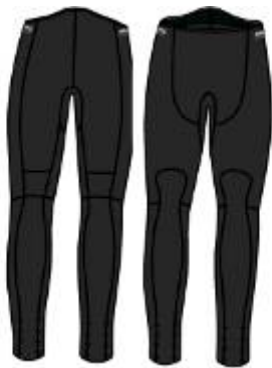
- 3mm neoprene
- Sleeves to be worn with short arm wetsuits for additional protection and warmth



SO1141BL

WETSUIT TROUSERS

Black



COLOUR VARIANTS

SIZE

S,M,L,XL,XXL

Home // SAILING // YACHTING TECHNICAL // DINGHY RANGE // WETSUIT TROUSERS

PRODUCT SPECIFICATIONS

- 3mm neoprene
- Super stretch panelling for optimum movement
- Anti abrasive seat, knee & shins for extra durability & comfort
- Blind stitched & glued seams to promote warmth and durability
- Glide skin waist band for extra comfort
- Leg length can be shortened to make the required length
- Additional anti abrasive at the knee for additional comfort & protection
- High back for kidney protection



AS6516RBK

REGATTA BUOYANCY AID

Red / Black



COLOUR VARIANTS

SIZE

JL-S,JS-JM,M-L,X-XXL

PRODUCT SPECIFICATIONS

- Closed cell foam construction
- 50 Newtons (5kg/11lbs) of buoyancy
- Pocket
- Waist belt
- Crotch strap on junior sizes



AS6523RBK

CHAMPIONSHIP BUOYANCY AID

Red / Black



COLOUR VARIANTS



Black / Silver



Silver / Black

SIZE

JL-S,JS-JM,M-L,X-XXL

PRODUCT SPECIFICATIONS

- Closed cell foam construction
- 50 Newtons (5kg/11lbs) of buoyancy
- Pocket
- Waist belt
- Crotch strap on junior sizes



AS0621BLSI

RACE HARNESS

Black / Silver



COLOUR VARIANTS

SIZE

JL-S,M-L,X-XXL

PRODUCT SPECIFICATIONS

- Nappy style
- Adjustable shoulder strap with shoulder buckle
- Variable position back support
- RWO® hook
- Contrast colour zig zag stitching
- Tough durable outer shell fabric



AS0640BLSI

ADJUSTABLE HARNESS

Black / Silver



COLOUR VARIANTS

SIZE

JL-S,JS-JM,M-L,X-XXL

PRODUCT SPECIFICATIONS

- Adjustable leg, hip & crotch features
- Adjustable shoulder strap with shoulder buckle
- Variable position back support
- Tough durable outer shell fabric



SD3212CIBK

Home // SAILING // YACHTING TECHNICAL // MIDDLE LAYER // GORETEX MIDDLE LAYER BLOUSON

GORETEX MIDDLE LAYER BLOUSON

Cinder / Black



COLOUR VARIANTS

SIZE

S,M,L,XL,XXL

PRODUCT SPECIFICATIONS

- GORE-TEX® Performance Shell
- Waterproof & breathable
- Recycled fleece lined
- Stand-up collar
- Elastic bound cuffs
- Water resistant front zip
- Two water resistant zipped handwarmer pockets
- Elastic bound hem



SD3221CIBK

Home // SAILING // YACHTING TECHNICAL // MIDDLE LAYER // GORETEX MIDDLE LAYER SALOPETTE

GORETEX MIDDLE LAYER SALOPETTE

Cinder / Black



COLOUR VARIANTS

SIZE

S,M,L,XL,XXL

PRODUCT SPECIFICATIONS

- GORE-TEX® Performance Shell
- Waterproof & breathable
- Recycled fleece lined
- Two water resistant zipped handwarmer pockets
- Lycra shoulder sections
- 2-way zip
- Back elasticated waist
- Knee & seat patches for added durability
- Tapered legs with elasticated ankle closures



SD3382BL

WINDSTOPPER MIDDLE LAYER JKT

Black



COLOUR VARIANTS

SIZE

S,M,L,XL,XXL

Home // SAILING // YACHTING TECHNICAL // MIDDLE LAYER // WINDSTOPPER MIDDLE LAYER JKT

PRODUCT SPECIFICATIONS

- WINDSTOPPER® fleece with an ePTFE membrane from manufacturers of GORE-TEX fabric
- Closely cut to avoid unnecessary bulk
- Windproof and showerproof zip
- Centre front zip with chin guard for protection and comfort
- Chest pocket & 2 side pockets
- Articulated elbows and underarms for ease of movement
- Shaped hem for warmth & minimal restriction
- Large WINDSTOPPER® product branding



SD3392BL

WINDSTOPPER M/L SALOPETTES

Black



COLOUR VARIANTS

SIZE

S,M,L,XL,XXL

Home // SAILING // YACHTING TECHNICAL // MIDDLE LAYER // WINDSTOPPER M/L SALOPETTES

PRODUCT SPECIFICATIONS

- WINDSTOPPER® fleece with an ePTFE membrane from manufacturers of GORE-TEX fabric
- Lycra upper body
- Closely cut to avoid unnecessary bulk
- Windproof and showerproof zip
- Articulated Knees
- Elasticated back
- Large WINDSTOPPER® product branding



SD0010BLCI

SHELLED MID LAYER JACKET

Black / Cinder



COLOUR VARIANTS

SIZE

S,M,L,XL,XXL

Home // SAILING // YACHTING TECHNICAL // MIDDLE LAYER // SHELLED MID LAYER JACKET

PRODUCT SPECIFICATIONS

- Lined with lightweight microfleece
- Elastic bound cuffs
- Water resistant front zip
- Chin guard
- Three zippered pockets
- Elastic bound hem



SD0020BLCI

SHELLED MID LAYER SALOPETTES

Black / Cinder



COLOUR VARIANTS

SIZE

S,M,L,XL,XXL

Home // SAILING // YACHTING TECHNICAL // MIDDLE LAYER // SHELLED MID LAYER SALOPETTES

PRODUCT SPECIFICATIONS

- Lined with lightweight microfleece
- Two zippered pockets
- Lycra shoulder sections
- 2-way zip
- Knee & seat patches for added durability
- Elastic bound cuffs
- Back elasticated waist



SD3351CISI

POLARTEC MIDDLE LAYER SMOCK

Cinder / Silver



COLOUR VARIANTS



Navy / Silver

SIZE

XS,S,M,L,XL,XXL

Home // SAILING // YACHTING TECHNICAL // MIDDLE LAYER // POLARTEC MIDDLE LAYER SMOCK

PRODUCT SPECIFICATIONS

- Recycled Polartec® Classic 200™
- Quick drying
- Lycra bound cuffs for comfort
- Side zip opening at neck
- Articulated underarms
- Contrast coloured underarm stripes & side panels
- Scooped back hem
- Polartec® branding



SD3361N

POLARTEC MIDDLE LAYER TROUSERS

Navy



COLOUR VARIANTS



Cinder

SIZE

XS,S,M,L,XL,XXL

Home // SAILING // YACHTING TECHNICAL // MIDDLE LAYER // POLARTEC MIDDLE LAYER TROUSERS

PRODUCT SPECIFICATIONS

- Recycled Polartec® Classic 200™
- Waist high trousers
- Adjustable elasticated waist
- Articulated legs
- Quick drying
- Lycra bound ankles for comfort
- Polartec® branding



SU0120BLSI

Home // SAILING // YACHTING TECHNICAL // BASE LAYER // TECHNICAL W/STOPPER ZIP NECK

TECHNICAL W/STOPPER ZIP NECK

Black / Silver



COLOUR VARIANTS



White / Silver

SIZE

XS,S,M,L,XL,XXL

PRODUCT SPECIFICATIONS

- WINDSTOPPER® Soft Shell
- Contrast colour under arm panels in polypropylene/lycra
- Centre front opening with chin guard
- High neck for protection
- Minimal absorption
- Flatlock stitching



SU0130BLSI

Home // SAILING // YACHTING TECHNICAL // BASE LAYER // TECHNICAL WINDSTOPPER JACKET

TECHNICAL WINDSTOPPER JACKET

Black / Silver



COLOUR VARIANTS

SIZE

XS,S,M,L,XL,XXL

PRODUCT SPECIFICATIONS

- WINDSTOPPER® Soft Shell
- Contrast colour under arm panels in polypropylene/lycra
- Centre front opening with chin guard
- High neck for protection
- Minimal absorption
- Flatlock stitching



SU3762IN

HP THERMAL TURTLE NECK

Ink



COLOUR VARIANTS

SIZE

S,M,L,XL,XXL

Home // SAILING // YACHTING TECHNICAL // BASE LAYER // HP THERMAL TURTLE NECK

PRODUCT SPECIFICATIONS

- Cold weather option
- Close fitting Polartec® Classic 100™ Micro stretch fleece
- Long length
- High neck
- Same colour underarm & side panel detail
- Flat non-abrasive seams for increased comfort
- Scooped hem



SU3771IN

HP THERMAL TROUSERS

Ink



COLOUR VARIANTS

SIZE

S,M,L,XL,XXL

Home // SAILING // YACHTING TECHNICAL // BASE LAYER // HP THERMAL TROUSERS

PRODUCT SPECIFICATIONS

- Cold weather option
- Close fitting Polartec® Classic 100™ Micro stretch fleece
- High elasticated waist providing overlap with shirt
- Flat non-abrasive seams for increased comfort



SU0091CISI

Home // SAILING // YACHTING TECHNICAL // BASE LAYER // THERMAL LONG SLEEVED CREW NECK

THERMAL LONG SLEEVED CREW NECK

Cinder / Silver



COLOUR VARIANTS



Ink / Silver



Silver / Cinder

SIZE

XS,S,M,L,XL,XXL

PRODUCT SPECIFICATIONS

- Lightweight polypropylene yarn
- Silver ion technology gives permanent anti-microbial function
- High wicking fabric
- Minimal absorption
- Contrast underarm and side panels



SU3537CISI

Home // SAILING // YACHTING TECHNICAL // BASE LAYER // THERMAL ZIP NECK

THERMAL ZIP NECK

Cinder / Silver



COLOUR VARIANTS



Ink / Silver



Silver / Cinder

SIZE

XS,S,M,L,XL,XXL

PRODUCT SPECIFICATIONS

- Lightweight polypropylene yarn
- Silver ion technology gives permanent anti-microbial function
- High wicking fabric
- Minimal absorption
- Contrast underarm and side panels
- Centre front opening



SU3567CISI

Home // SAILING // YACHTING TECHNICAL // BASE LAYER // THERMAL TURTLE NECK

THERMAL TURTLE NECK

Cinder / Silver



COLOUR VARIANTS



Ink / Silver



Silver / Cinder

SIZE

XS,S,M,L,XL,XXL

PRODUCT SPECIFICATIONS

- Lightweight polypropylene yarn
- Silver ion technology gives permanent anti-microbial function
- High wicking fabric
- Minimal absorption
- Contrast underarm and side panels
- High neck for extra protection



SU3577CI

Home // SAILING // YACHTING TECHNICAL // BASE LAYER // THERMAL TROUSERS

THERMAL TROUSERS

Cinder



COLOUR VARIANTS



Ink



Silver

SIZE

XS,S,M,L,XL,XXL

PRODUCT SPECIFICATIONS

- Lightweight polypropylene yarn
- Silver ion technology gives permanent anti-microbial function
- High wicking fabric
- Minimal absorption
- High neck for extra protection
- High elasticated waist providing overlap with shirt



KS143J1RDDG

JUNIOR MPX GORE-TEX DRYSUIT

Red / Dark Grey



COLOUR VARIANTS



Black

SIZE
JM, JL

Home // SAILING // YACHTING TECHNICAL // JUNIOR // JUNIOR MPX GORE-TEX DRYSUIT

PRODUCT SPECIFICATIONS

- GORE-TEX® Performance Shell (Coastal Technology) laminate
- Latex neck, wrist & feet protected by fabric tabs to reduce UVA damage & tears
- Metal Dynat diagonal front zip
- Internal braces for optimum fit
- Articulated elbows & knees
- 500 denier Cordura seat & knee patches with internal abrasion free seams
- Waist belt with adjustable buckle closure
- Thigh pocket with water deflecting inner lip



KS200J5BL

JUNIOR DINGHY DRYSUIT

Black



COLOUR VARIANTS

SIZE
JS, JM, JL

Home // SAILING // YACHTING TECHNICAL // JUNIOR // JUNIOR DINGHY DRYSUIT

PRODUCT SPECIFICATIONS

- Nylon Oxford 210D Breathable 3 Layer Fabric
- Dynat zip
- Elasticated internal braces with security pocket attached
- Latex boots
- 600D polyester reinforced seat and knee patches with turned back corners to aid drainage
- 2mm Neoprene glideskin collar and cuffs
- Self fabric cuff covers
- Elasticated draw in rear waist section



KS153J1BLSI

BR1 JUNIOR DINGHY SMOCK

Black / Silver



COLOUR VARIANTS



Silver / Black

SIZE

JS, JM, JL

Home // SAILING // YACHTING TECHNICAL // JUNIOR // BR1 JUNIOR DINGHY SMOCK

PRODUCT SPECIFICATIONS

- Waterproof & breathable
- Secure neck closure with waterproof gusset
- Diagonal, zipped chest pockets for easy access when wearing buoyancy aid
- Under arm articulation for ease of movement
- Smooth non-abrasive stretch neck & wrist seals with Velcro adjustment
- Velcro adjustable neoprene waistband to prevent garment riding up
- Water resistant zip



KS159J3BL

BR1 JUNIOR DINGHY HI-FITS

Black



COLOUR VARIANTS

SIZE

JS, JM, JL

Home // SAILING // YACHTING TECHNICAL // JUNIOR // BR1 JUNIOR DINGHY HI-FITS

PRODUCT SPECIFICATIONS

- Waterproof & breathable
- Extra high front & back for extra protection
- Velcro adjustable elasticated braces for comfort
- Elasticated underarms
- Articulated Knees
- 450 denier knee & seat patches with internal abrasion free seams
- Thigh pocket with water deflecting inner lip
- Velcro adjustable ankle cuffs



KS003J0BL

JUNIOR FLEECE AQUA TOP

Black



COLOUR VARIANTS

SIZE

JS, JM, JL

Home // SAILING // YACHTING TECHNICAL // JUNIOR // JUNIOR FLEECE AQUA TOP

PRODUCT SPECIFICATIONS

- Water repellent coated fleece fabric
- Matching colour, rash vest for comfort
- Matching colour flat lock seaming



KS002J0BL

JUNIOR TURTLE NECK AQUA TOP

Black



COLOUR VARIANTS

SIZE

JS, JM, JL

Home // SAILING // YACHTING TECHNICAL // JUNIOR // JUNIOR TURTLE NECK AQUA TOP

PRODUCT SPECIFICATIONS

- Water repellent coated fleece fabric
- Matching colour flat lock seaming
- Self fabric, adjustable high neck for extra protection



KS106J0BLSI

JUNIOR LONG SLEEVED RASH VEST

Black / Silver



COLOUR VARIANTS



Red / Silver



White / Silver

SIZE

JS, JM, JL

Home // SAILING // YACHTING TECHNICAL // JUNIOR // JUNIOR LONG SLEEVED RASH VEST

PRODUCT SPECIFICATIONS

- 88% Nylon, 12% Spandex
- Contoured seams
- High neck for extra protection and added comfort
- Scooped hem



KS107J0BLSI

JNR SHORT SLEEVED RASH VEST

Black / Silver



COLOUR VARIANTS



Red / Silver



White / Silver

SIZE

JS, JM, JL

Home // SAILING // YACHTING TECHNICAL // JUNIOR // JNR SHORT SLEEVED RASH VEST

PRODUCT SPECIFICATIONS

- 88% Nylon, 12% Spandex
- Contoured seams
- High neck for extra protection and added comfort
- Scooped hem



KS100J1BLSI

JUNIOR SHORT ARM WETSUIT

Black / Silver



COLOUR VARIANTS

SIZE

JS, JM, JL

PRODUCT SPECIFICATIONS

- 3mm neoprene
- Super stretch panelling for optimum movement
- Smooth skin chest panel
- Flat lock seaming to reduce chaffing
- Glideskin arm & leg cuffs for extra comfort
- Anti abrasive seat, knee & shins for extra durability & comfort
- Leg length can be shortened to make the required length
- YKK Zip with long Musto branded zip pull
- Ergonomic neck closure with easy pull tab
- Wetsuit adaptor included (SO1110)



KS102J0BLSI

JUNIOR SHORTIE WETSUIT

Black / Silver



COLOUR VARIANTS

SIZE

JS, JM, JL

PRODUCT SPECIFICATIONS

- 3mm neoprene
- Super stretch panelling for optimum movement
- Smooth skin chest panel
- Flat lock seaming to reduce chaffing
- Glideskin arm & leg cuffs for extra comfort
- Anti abrasive seat for extra durability & comfort
- YKK Zip with long Musto branded zip pull
- Ergonomic neck closure with easy pull tab



KS111J0BL

JUNIOR WETSUIT ADAPTOR

Black



COLOUR VARIANTS

SIZE

JS, JM, JL

PRODUCT SPECIFICATIONS

- 3mm neoprene
- Sleeves to be worn with short arm wetsuits for additional protection and warmth



KS500J0BLSI

JNR BREATHABLE HIKING PANTS

Black / Silver



COLOUR VARIANTS

SIZE

JS, JM, JL

PRODUCT SPECIFICATIONS

- 3mm neoprene with breathable airflow panels
- Super stretch panelling for optimum movement
- Taped outer seams for extra durability
- Glideskin arm & leg cuffs for extra comfort
- Anti abrasive seat for extra durability & comfort
- Stiff batton patches on back of thighs
- 3/4 Length
- Cross over shoulder straps
- Low cut front



KS118J4DGW

BR1 JUNIOR INSHORE JACKET

Dark Grey / White



COLOUR VARIANTS



Red / Dark Grey

SIZE

JS, JM, JL

Home // SAILING // YACHTING TECHNICAL // JUNIOR // BR1 JUNIOR INSHORE JACKET

PRODUCT SPECIFICATIONS

- Waterproof & breathable
- Roll-away fully adjustable peaked hood
- Fleece lined collar
- Articulated elbows
- Adjustable double cuff design giving virtual drysuit cuff protection
- Double storm flap with drainage channel covering zip
- Zipped fleece lined handwarmer pockets
- Inner security pocket
- Adjustable hem tensioner

MUSTO PERFORMANCE
ANYWEAR.

KS119J1NPL

BR1 JUNIOR INSHORE RACE JACKET

Navy / Platinum



COLOUR VARIANTS



Powder Blue /
Platinum

SIZE

JS, JM, JL

Home // SAILING // YACHTING TECHNICAL // JUNIOR // BR1 JUNIOR INSHORE RACE JACKET

PRODUCT SPECIFICATIONS

- Waterproof & breathable
- Roll-away fully adjustable peaked hood
- Fleece lined collar
- Articulated elbows
- Adjustable cuff design giving virtual drysuit cuff protection
- Water resistant front zip
- Water resistant zipped fleece lined handwarmer pockets
- Inner security pocket
- Adjustable hem tensioner

MUSTO PERFORMANCE
ANYWEAR.

KS117J8DGDG

Home // SAILING // YACHTING TECHNICAL // JUNIOR // BR1 JUNIOR TROUSERS

BR1 JUNIOR TROUSERS

Dark Grey / Dark Grey



COLOUR VARIANTS

SIZE

JS, JM, JL

PRODUCT SPECIFICATIONS

- Waterproof & breathable
- Velcro adjustable 'non slip' wide elasticated braces
- Elasticated underarms
- Multi-tool attachment facility
- Heavy duty 2-way zip & high waterproof gusset
- Articulated Knees
- 600 denier seat & knee patches with internal abrasion free seams
- Velcro adjustable ankle cuffs
- Thigh pocket with water deflecting inner lip
- Fully lined



AS0220BL

Home // SAILING // SAILING ACCESSORIES // GLOVES // OFFSHORE GLOVES

OFFSHORE GLOVES

Black



COLOUR VARIANTS

SIZE

S, M, L, XL

PRODUCT SPECIFICATIONS

- Showerproof ripstop nylon Taslan shell
- Reinforced easy grip palm & fingers
- Velcro adjustable wrist strap
- Thermal lining
- Waterproof inner liner



FC0560BN

Home // FOOTWEAR // COUNTRY FOOTWEAR // BUCKDEN SHOOTING BOOT

BUCKDEN SHOOTING BOOT

Brown



COLOUR VARIANTS



Chestnut

SIZE

5,6,7,8,9,10,11,12,13,14

PRODUCT SPECIFICATIONS

- Waterproof & breathable GORE-TEX® technology
- Water resistant leather upper
- Double layer leather to maintain boot shape throughout the front profile
- Tapered & curved upper to increase comfort around the calf
- Embossed Musto logo on heel & zip cover strap
- YKK heavy gauge side zip
- Leather tab & stud to ensure zip pull remains locked
- Leather lined zip gussets
- Supportive heel & toe stiffener
- Removable leather lined shock absorbing footbed
- Vibram® outdoor sole providing excellent grip & durability
- Supplied with Plastic moulded boot tree



FC0760CHNT

Home // FOOTWEAR // COUNTRY FOOTWEAR // DEEPDALE COUNTRY BOOT

DEEPDALE COUNTRY BOOT

Chestnut



COLOUR VARIANTS



Brown

SIZE

4,4.5,5,5.5,6,6.5,7,7.5,8

PRODUCT SPECIFICATIONS

- Waterproof & breathable GORE-TEX® technology
- Water resistant leather upper
- Tapered & curved upper to increase comfort around the calf
- Embossed Musto logo on heel & zip cover strap
- YKK heavy gauge side zip
- Leather buckle to ensure zip pull remains locked
- Supplied with a choice of 3 leather, inter-changeable zip tazzles
- Leather lined zip gussets
- Supportive heel & toe stiffener
- Removable leather lined shock absorbing footbed
- Vibram® outdoor sole providing excellent grip & durability
- Supplied with Plastic moulded boot tree



FC0021BN

LADIES BAINBRIDGE COUNTRY BOOT

Brown



COLOUR VARIANTS

SIZE

3,3.5,4,4.5,5,5.5,6,6.5,7,7.5,8

Home // FOOTWEAR // COUNTRY FOOTWEAR // LADIES BAINBRIDGE COUNTRY BOOT

PRODUCT SPECIFICATIONS

- Waterproof & breathable GORE-TEX® technology
- Water resistant leather upper
- Tonal side panels
- Double layer leather to maintain boot shape throughout the front profile
- Supportive heel & toe stiffener
- Removable leather lined shock absorbing footbed
- Embossed Musto logo on heel
- Vibram® outdoor sole providing excellent grip & durability
- Supplied with Plastic moulded boot tree
- Style sizes have been split - FC0021 for sizes 3 to 8 and FC0031 for sizes 3.5-7.5.



FC0010BN

ARNCLIFFE COUNTRY ANKLE BOOT

Brown



COLOUR VARIANTS

SIZE

5,6,7,8,9,10,11,12,13,14

Home // FOOTWEAR // COUNTRY FOOTWEAR // ARNCLIFFE COUNTRY ANKLE BOOT

PRODUCT SPECIFICATIONS

- Waterproof & breathable GORE-TEX® technology
- Water resistant full grain matt leather upper
- Padded tongue & collar for snug fit & increased comfort
- Bellows tongue for higher waterproofing level
- Embossed Musto logo on tongue
- Five anti-rust oval eyelet lace closure
- Supportive heel & toe stiffener
- Removable leather lined shock absorbing footbed
- Vibram® outsole with torsion innersole shank to increase lateral stability



FS0390DGBL

Home // FOOTWEAR // SAILING FOOTWEAR // HPX OCEAN BOOT

HPX OCEAN BOOT

Dark Grey / Black



COLOUR VARIANTS

SIZE

5,6,7,8,9,10,11,12,13,14

PRODUCT SPECIFICATIONS

- Full height boot
- Waterproof, breathable boot-lining with GORE-TEX® fabric
- Unique integral water repellent stretch gaiter for ultimate foul weather protection
- Durable and waterproof leather lower boot
- Removable anatomically shaped cushioning footbed (to accelerate drying)
- GripDeck outsole for excellent traction & lateral stability
- Leather pull on tab
- Elasticated drawstring top
- High density foam ankle protector



FS0550BN

Home // FOOTWEAR // SAILING FOOTWEAR // LEATHER HPX BOOT

LEATHER HPX BOOT

Brown



COLOUR VARIANTS

SIZE

5,6,7,8,9,10,11,12,13,14

PRODUCT SPECIFICATIONS

- 3/4 height boot
- Waterproof, breathable boot-lining with GORE-TEX® fabric
- Durable & waterproof leather
- Removable anatomically shaped cushioning footbed (to accelerate drying)
- GripDeck outsole for excellent traction & lateral stability
- Leather pull on tab
- High density foam ankle protector



FS0400BNN

Home // FOOTWEAR // SAILING FOOTWEAR // HPX BOOT

HPX BOOT

Brown / Navy



COLOUR VARIANTS

SIZE

5,6,7,8,9,10,11,12,13,14

PRODUCT SPECIFICATIONS

- 3/4 height boot
- Waterproof, breathable boot-lining with GORE-TEX® fabric
- Durable & waterproof leather
- Removable anatomically shaped cushioning footbed (to accelerate drying)
- GripDeck outsole for excellent traction & lateral stability
- Leather pull on tab
- High density foam ankle protector



FS0620BL

Home // FOOTWEAR // SAILING FOOTWEAR // HPX RACE BOOT

HPX RACE BOOT

Black



COLOUR VARIANTS

SIZE

5,6,7,8,9,10,11,12,13,14

PRODUCT SPECIFICATIONS

- 3/4 height boot
- Waterproof, breathable boot-lining with GORE-TEX® fabric
- Durable & waterproof leather
- Removable anatomically shaped cushioning footbed (to accelerate drying)
- GripDeck outsole for excellent traction & lateral stability
- Leather pull on tab
- High density foam ankle protector



FS0470BN

PERFORMANCE DECK SHOE

Brown



COLOUR VARIANTS



Dark Brown

SIZE

4.5,5,5.5,6,6.5,7,7.5,8,8.5,9,9.5,10,10.5,11,12,13,14

Home // FOOTWEAR // SAILING FOOTWEAR // PERFORMANCE DECK SHOE

PRODUCT SPECIFICATIONS

- 100% leather uppers & leather lined
- Padded tongue & collar for snug fit & increased comfort
- GripDeck outsole for excellent traction & lateral stability
- Removable anatomically shaped cushioning footbed (to accelerate drying)



FS0450NG

GP RACE SHOE

Navy / Grey



COLOUR VARIANTS



Sail White / Silver

SIZE

4.5,5,5.5,6,6.5,7,7.5,8,8.5,9,9.5,10,10.5,11,12,13,14

Home // FOOTWEAR // SAILING FOOTWEAR // GP RACE SHOE

PRODUCT SPECIFICATIONS

- Athletic cut shoe with high flexibility & sensitivity
- Breathable mesh/suede upper
- Padded tongue for snug fit & increased comfort levels
- Anti microbial treatment in mesh & lining
- GripDeck outsole for excellent traction & lateral stability
- Removable anatomically shaped cushioning footbed (to accelerate drying)
- Style sizes have been split - FS0450 for sizes 5 to 14 and FS0460 for sizes 4.5-10.5.



FS0071BL

REGATTA

Black



COLOUR VARIANTS



Grey



White

SIZE

5,6,7,7.5,8,8.5,9,9.5,10,10.5,11,12,13,14

PRODUCT SPECIFICATIONS

- Synthetic PU upper
- Removable EVA shock absorbing mid-sole
- Anti microbial treatment
- GD360 outsole
- Padded tongue & collar for increased comfort
- Easy on/off pull loop
- Style sizes have been split - FS0071 for sizes 5 to 8.5 and FS0081 for sizes 9-14.



FS0111BL

MATCH

Black



COLOUR VARIANTS



Grey



Powder Blue



Sail White

SIZE

5,6,7,7.5,8,8.5,9,9.5,10,10.5,11,12,13,14

PRODUCT SPECIFICATIONS

- Synthetic PU upper
- GD360 outsole
- EVA shock absorbing mid-sole
- Anti microbial treatment
- Side mesh vents for water drainage & increased drying speed
- Cord lock/bungee lacing system
- Easy on/off rear pull loop
- Neoprene sock 4 way stretch construction
- Style sizes have been split - FS0111 for sizes 4 to 8.5 and FS0121 for sizes 9-14. Powder blue is only available as FS0111 in "ladies" sizes 4 to 8



FS0690BN

SLAPS

Brown



COLOUR VARIANTS



Light Stone



Navy



Sail White

SIZE

4,5,6,7,8,9,10,11,12,13,14

PRODUCT SPECIFICATIONS

- Lightweight EVA outsole
- Anatomically shaped footbed
- Suede leather lined footbed
- Suede leather arch strap



FS0640DBN

PORTO CERVO

Dark Brown



COLOUR VARIANTS



Navy



Sand



White

SIZE

4.5,5,6,7,7.5,8,8.5,9,9.5,10,10.5,11,12,13,14

PRODUCT SPECIFICATIONS

- 2 eyelet moccasin shoe
- Continuous leather lacing
- Water resistant leather with mesh insert panels
- Removable anatomically shaped foot bed
- Concealed EVA shock absorbing mid-sole
- Style sizes have been split - FS0640 for sizes 4 to 8.5 and FS0081 for sizes 9-14. White is only available as FS0640 in "ladies" sizes 4 to 8



FS0010BL

PERFORMANCE DINGHY BOOT

Black



COLOUR VARIANTS

SIZE

S,M,L,XL,XXL

Home // FOOTWEAR // SAILING FOOTWEAR // PERFORMANCE DINGHY BOOT

PRODUCT SPECIFICATIONS

- Razor cut sole for maximum grip and flexibility
- Glued & blind stitched for extra strength
- 5mm double lined neoprene for warmth
- Gusset behind zip to protect clothing
- Velcro tab across zip

MUSTO PERFORMANCE
ANYWEAR.

FS001J0BL

JUNIOR PERFORMANCE DINGHY BOOT

Black



COLOUR VARIANTS

SIZE

JM,JL

Home // FOOTWEAR // SAILING FOOTWEAR // JUNIOR PERFORMANCE DINGHY BOOT

PRODUCT SPECIFICATIONS

- Razor cut sole for maximum grip and flexibility
- Glued & blind stitched for extra strength
- 5mm double lined neoprene for warmth
- Gusset behind zip to protect clothing
- Velcro tab across zip

MUSTO PERFORMANCE
ANYWEAR.

FS0020BL

DINGHY BOOT

Black



COLOUR VARIANTS

SIZE

S,M,L,XL,XXL

Home // FOOTWEAR // SAILING FOOTWEAR // DINGHY BOOT

PRODUCT SPECIFICATIONS

- Moulded rubber outsole
- Glued & blind stitched for extra strength
- 5mm double lined neoprene for warmth
- Velcro tab across zip
- Gusset behind zip to protect clothing
- YKK self locking zip



FS002J0BL

JUNIOR DINGHY BOOT

Black



COLOUR VARIANTS

SIZE

JM,JL

Home // FOOTWEAR // SAILING FOOTWEAR // JUNIOR DINGHY BOOT

PRODUCT SPECIFICATIONS

- Moulded rubber outsole
- Glued & blind stitched for extra strength
- 5mm double lined neoprene for warmth
- Gusset behind zip to protect clothing
- Velcro tab across zip



FS0140BLSI

DINGHY SHOE

Black / Silver



COLOUR VARIANTS

SIZE

JL-S,M-L,XL-XXL

Home // FOOTWEAR // SAILING FOOTWEAR // DINGHY SHOE

PRODUCT SPECIFICATIONS

- Moulded rubber outsole
- Heel & toe reinforcement
- Glued & blind stitched for extra strength
- Glide skin collar for added comfort
- Adjustable Velcro strap



FS014J0BLSI

JUNIOR DINGHY SHOE

Black / Silver



COLOUR VARIANTS

SIZE

JM,JL

Home // FOOTWEAR // SAILING FOOTWEAR // JUNIOR DINGHY SHOE

PRODUCT SPECIFICATIONS

- Moulded rubber outsole
- Heel & toe reinforcement
- Glued & blind stitched for extra strength
- Glide skin collar for added comfort
- Draw string collar

